



Metropolitan Computing Corporation

Process Instrumentation, Monitoring and Control

6 Great Meadow Lane, East Hanover, New Jersey 07936, U.S.A.

e-mail: mail@mcc-online.com Web address: www.mcc-online.com

Tel: (973) 887-7800 Fax: (973) 887-8447

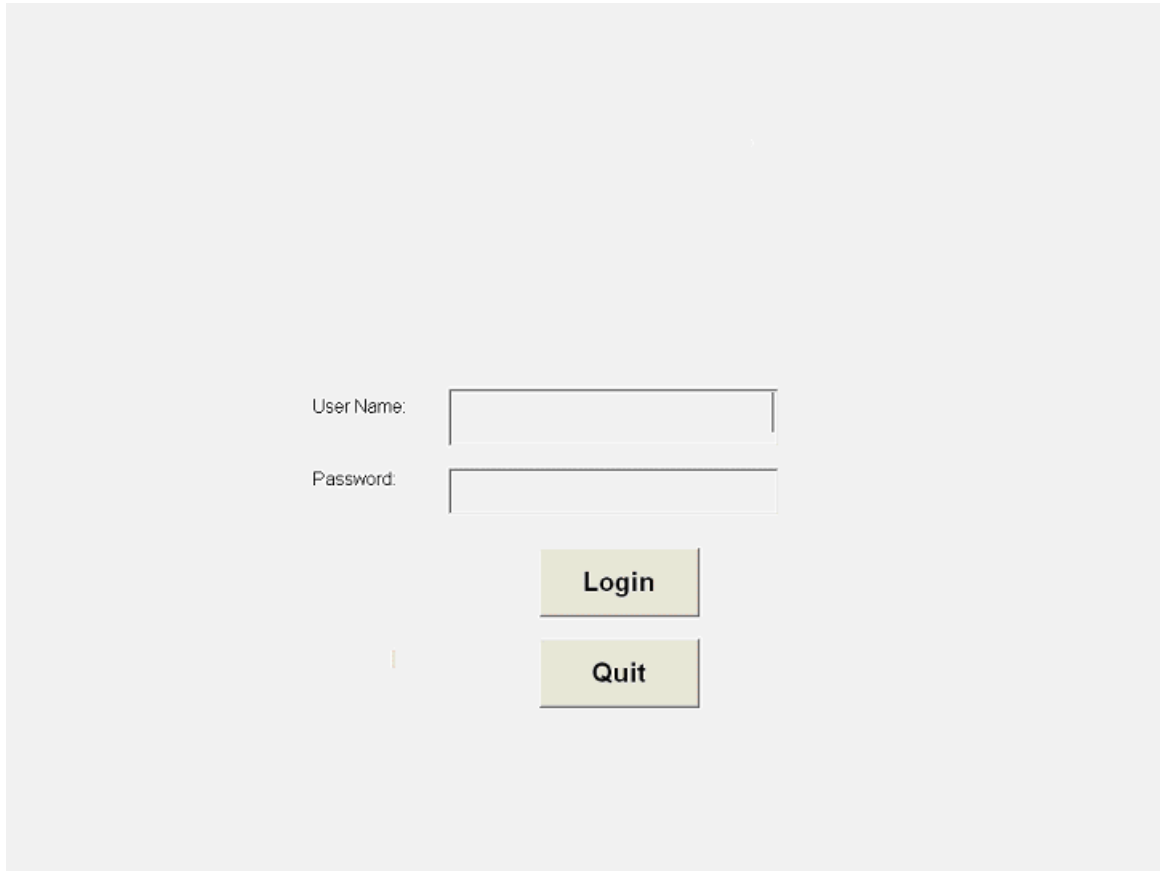
Tablet Press Controller (TPC)

User Manual

Table of Contents

- 1. Login / Logout..... 3
- 2. Logout..... 4
- 3. Quit..... 4
- 4. Status..... 5
- 5. Recipe..... 7
- 6. Punches..... 9
- 7. Reports 10
- 8. Setup..... 11
- 9. Troubleshooting 13
- 10. TPC Maintenance 13
- 11. Glossary 16
- 12. MCC Support 18

1. Login / Logout

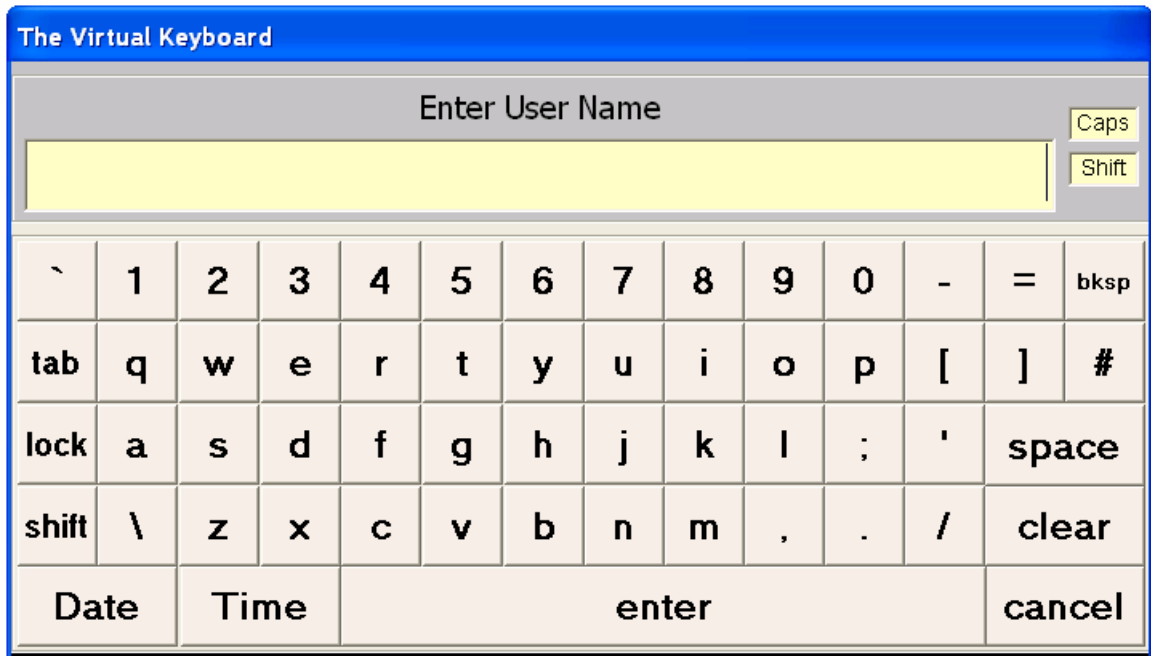


The image shows a login/logout interface on a light gray background. It features two input fields: "User Name:" and "Password:". Below these fields are two buttons: "Login" and "Quit".

User Name:

Password:

- 1.1. Touch the User Name field and, using the touch-screen virtual keyboard, enter *User Name*, press “enter”. Note: User name is NOT case sensitive.



1.2. Touch the Password field and, using the touch-screen virtual keyboard, type in appropriate *Password*, press “enter”. Note: Password is case sensitive.

1.3. Tap on the *Login* bar to login.

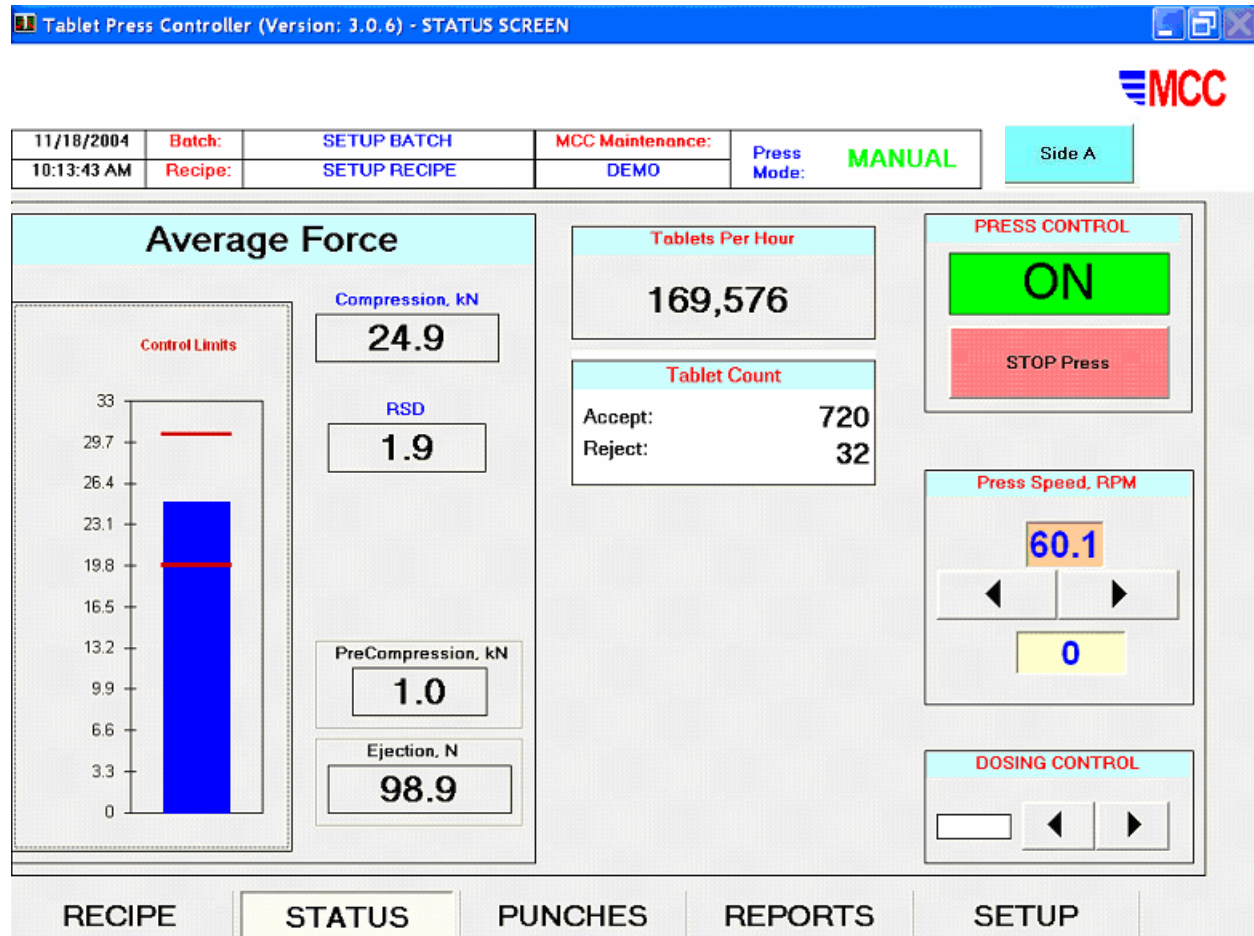
2. Logout

2.1. Tap on the *Operator* box located at the top center of the *Setup screen* to logout.

3. Quit

3.1. To quit the program, authorization (name and password) with a supervisor access level is required.

4. Status



4.1. The TPC Status screen is the first screen that comes up after Login. It provides real-time tablet press information and access to other TPC features.

4.2. Status screen - Current Information

Current information is displayed across the top of the TPC *Setup* screen for user convenience. The information is stored in *Recipe* file, *Setup* file and *Reports*. The following items are shown:

- 4.2.1. Date & Time – displayed in 24-hour style
- 4.2.2. Recipe & Batch - current recipe file name and batch number
- 4.2.3. Operator - operator who logged onto system
- 4.2.4. Press Mode - manual or automatic
- 4.2.5. For a double sided press, Side A (or Side B) – indicates press side. This is also a toggle switch between the two sides.
- 4.2.6. Alarm ACK - alarm acknowledgement after an alarm

3/21/01	Batch:	1	OPERATOR:	Press Mode:	Manual	Side A	Alarm ACK
1:35:01 PM	Recipe:	PLACEBO					

4.3. Average Force

The *Average Force* section of the *TPC Setup screen* displays current average compression (kN), and, optionally, precompression (kN) and ejection (N) forces in digital format. In addition, compression force is shown on an analog style meter with high and low control limits indicated. Note: control limit is a recipe parameter.

4.4. Tablet Count

The *Tablet Count* window displays both Good and Bad tablet count values for the current batch. Values are updated in real time.

4.5. Tablets per Hour

The *Tablets per Hour* window displays the actual number of tablets being produced by the press, each hour, based on press speed and number of tooled stations.

4.6. Press Speed, RPM

Press speed, measured in RPM, is determined by the system proximity switch. Both *Actual* and *Desired* values are displayed. The *Desired* value (on the bottom) is changeable using the arrow buttons. It may take time for the actual value to reach the pre-set desired speed value.

4.7. Press Control

The operator can shut down the press using the *Stop Press* button. The indicator field above the button corresponds to the logical state (on/off) of the press motor.

4.8. Dosing Control

In the *Dosing Control* box, the tablet press dosing cam position can be adjusted by the user when the system is in MANUAL mode.

4.9. Feeder Speed (optional)

In the *Feeder Speed*, the tablet press feeder speed is displayed in digital format. Both *Desired* and *Actual* values are displayed. The *Desired* value is changeable using the arrow buttons below the digital display.

5. Recipe

A *Recipe* is basically a file of user-prescribed software control parameters including upper and lower tablet rejection and press shutdown values, and individual tablet parameters including weight, thickness and hardness. In addition, product name, tooling type, and various user information is stored.

Tablet Press Controller (Version: 3.0.6) - RECIPE SCREEN

MCC

11/18/2004	Batch: SETUP BATCH	MCC Maintenance: DEMO	Press Mode: MANUAL	Side A
10:30:27 AM	Recipe: SETUP RECIPE			

Recipe Control

Recipe Name:

SETUP RECIPE

ADD NEW DELETE

Recipe Parameters

Product Name: Placebo

Product Code: Placebo

Target Weight: 250 mg

Target Thickness: 5.5 mm

Target Hardness: 12 kP

Comments:

This is a setup Recipe for system startup.

Target Turret RPM: 15.0

Target Feeder RPM: 25

Max Tool Force: 80 kN

Control Parameters		
Forces	Value	Percent
Upper Shutdown:	29.9	6.7
Upper Rejection:	29.5	5.2
Upper Control:	30.3	8.4
Target Force:	28.0 kN	
Lower Control:	19.8	29.2
Lower Rejection:	26.0	7.0
Lower Shutdown:	20.5	26.7

Batch Control

Auto No.	Desired Batch Size	Lot Number
1	0	12345

Batch Name: SETUP BATCH

Stop Batch

RECIPE
STATUS
PUNCHES
REPORTS
SETUP

5.1. Recipe Control

The *Recipe Control* box allows the user to select from the list of the existing recipes, as well as the ability (with proper access level) to *Add New*, *Delete* or *Modify* existing recipes.

5.2. Control Parameters

5.2.1. TPC tablet press control parameters are set in this box. Based on the user-prescribed *Target Force*, the *Upper* and *Lower Rejection* and *Shutdown* limits are established. The rejection and shutdown limits are displayed in digital form as well as in percentage based on the target force. All values are shown in kN.

5.2.2. Changes to numerical values are made using the Virtual Numeric Keypad,

- 5.2.3. All changes to target and limits will be used by TPC on-the-fly. That is to say, they will be used by the controller but not stored in the Recipe. On-the-fly changes can be made by Operator, but any changes to Recipes can be made by Supervisor only. To apply the on-the-fly changes, the user has to hit “Submit Changes” button.
- 5.2.4. When the batch is stopped, a supervisor can store changes in the current Recipe by touching the “Save Changes” button. To store changes in a new Recipe, touch Add New button.

5.3. Recipe Parameters

The following entries are part of the Recipe:

- 5.3.1. *Target Weight* is entered in mg.
- 5.3.2. *Target Thickness* is entered in mm.
- 5.3.3. *Target Hardness* is entered in kP.
- 5.3.4. Target turret and feeder RPM can be entered in this section as well.
- 5.3.5. Comments and notes such as *Product Name*, *Product Code* and other comments can also be typed in by the user in this section for reference.

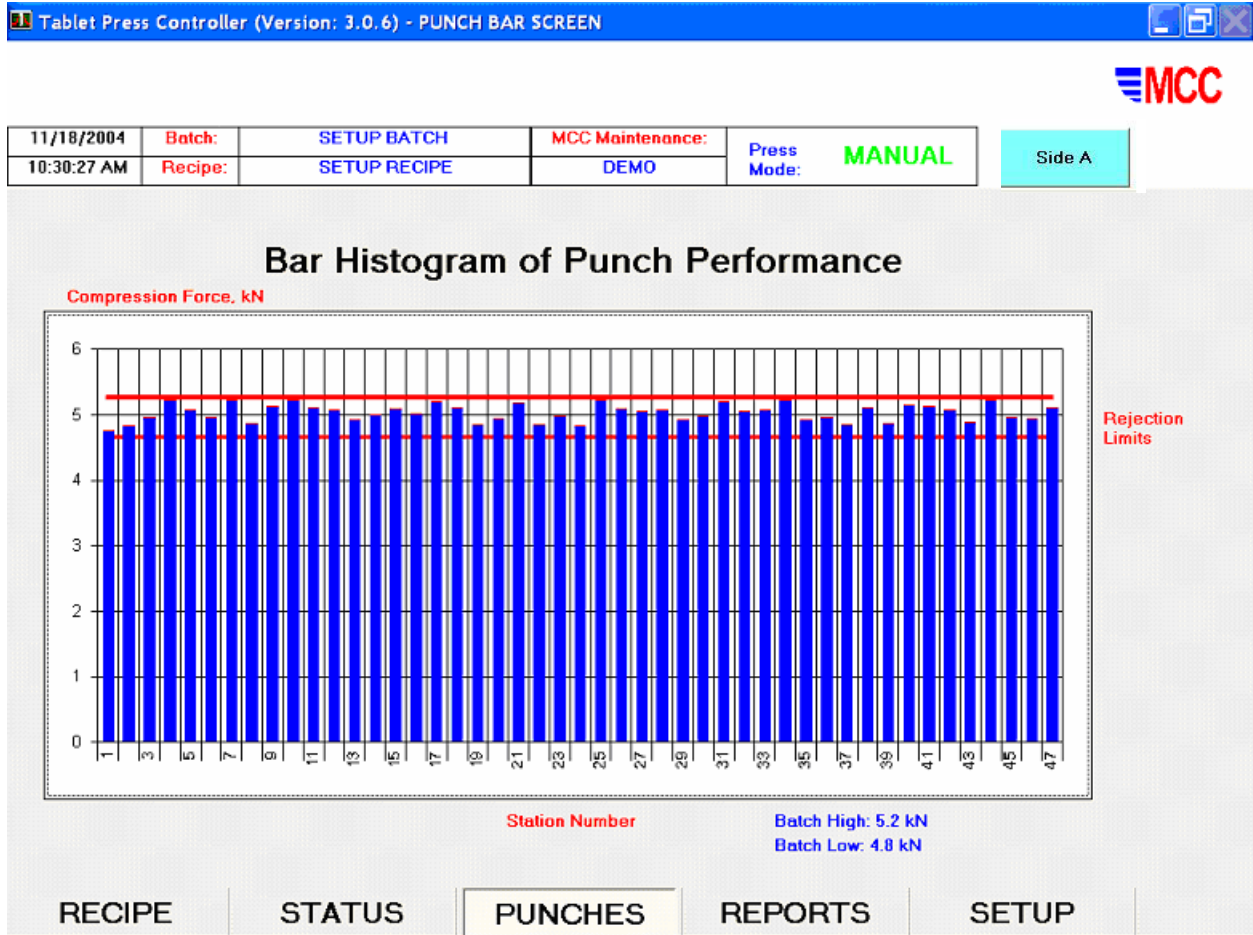
5.4. Batch Control

- 5.4.1. The *Batch Control* box offers options to *Start Batch*, limit the batch size, or assign a *Lot Number*. *Run Number* is assigned automatically by the computer each time you start a new Batch,
- 5.4.2. Tap your finger on the *Desired Batch Size* space and enter a value using the Virtual Numeric Keypad, or use the default value.
- 5.4.3. To assign a Lot Number, first tap the Lot Number field, then type in the number on the Keypad.
- 5.4.4. When you tap on Start Batch button, a new batch will begin. You can Stop Batch at any time and after that you can either Resume Batch or Start Batch (new batch) again. When you select to Resume Batch, all tablet counters continue from the point the batch was stopped. When you Start Batch, all tablet counters restart from 0.
- 5.4.5. When you start or resume a batch, the screen changes to Setup screen. That means the batch is running under the current Recipe. If you want to change Recipe, go to the Recipe screen and stop the batch first.

6. Punches

6.1. Tap on the Punches tab to view punch forces.

Individual punch forces are displayed on the *Punch* screen on bar histogram.



6.2. Forces outside the rejection limits change color to red.

7. Reports

7.1. Tap on the Reports tab to view the Batch report that makes all the current batch and recipe information available to the user for review and printout.

11/18/2004	Batch:	SETUP BATCH	MCC Maintenance:	Press Mode: MANUAL	Side A
10:30:27 AM	Recipe:	SETUP RECIPE	DEMO		

TABLET PRESS CONTROLLER REPORT
Batch File Path: c:\tpc\reports\report_11182004-103024AM_BatchAutoNo_1.txt
11/18/2004 10:47:44 AM
Current Operator: DEMO
Current Recipe: SETUP RECIPE
Product Code: Placebo
Product Name: Placebo
Upper Shutdown Limit: 5.3 kN
Upper Rejection Limit: 5.3 kN
Upper Control Limit: 7.8 kN
Target Compression Force: 5.0 kN
Lower Control Limit: 3.5 kN
Lower Rejection Limit: 4.7 kN
Lower Shutdown Limit: 3.7 kN

Audit TrailUpdate Batch ReportPrint Batch Report

RECIPESTATUSPUNCHESREPORTSSETUP

7.2. Batch reports can be updated upon request by hitting the “Update Batch Report” button.

7.3. Review the Audit Trail *Event Log* separately by tapping on the *Audit Trail* button. You can also select historical Audit Trail files to view or print.

8. Setup

8.1. The TPC *Setup* screen options include Calibration, Password Control, Setup Parameters, and other functions. A brief description is given below.

Tablet Press Controller (Version: 3.0.6) - SETUP SCREEN

MCC

11/18/2004	Batch:	SETUP BATCH	MCC Maintenance:	Press Mode: MANUAL	Side A
10:30:27 AM	Recipe:	SETUP RECIPE	DEMO		

Calibration			
Transducer	Side	Value	Last Calibration Date
PreCompression	1	20.22	04/08/04
Compression	1	20.03	04/08/04
Ejection	1	100	04/08/05
PreCompression	2	N/A	
Compression	2	N/A	
Ejection	2	N/A	

COPY FILES

SHUT DOWN COMPUTER

MAINTENANCE SCREEN

Password Control

Add Edit Delete

Rejection Gate Delays

Between compression event and slow reject gate (D1)

To keep slow rejection gate open after a bad tablet was encountered (D2)

Between compression event and fast reject gate (D3)

Units of Measurement

Channels	Tablet
Precompression <input type="text" value="kN"/>	Weight <input type="text" value="mg"/>
Compression <input type="text" value="kN"/>	Hardness <input type="text" value="kP"/>
Ejection <input type="text" value="N"/>	Thickness <input type="text" value="mm"/>
	Diameter <input type="text" value="mm"/>

Setup Parameters

Number of sequential rejected tablets (S) that will trigger an alarm

Number of revolutions (R) to reject after press startup

Number of rejected tablets (T) in N revolutions that will trigger an alarm

Number of revolutions (N) for calculation

Number of minutes (M) of user inactivity to autolock

Number of revolutions (A) to control mode

Number of stations (M3) to keep dosing motor ON

RECIPE
STATUS
PUNCHES
REPORTS
SETUP

8.2. Calibration

This section displays the current calibration in a table that includes: transducer name, transducer calibration factor, and last calibration date. Users with maintenance level access can change calibration factors.

8.3. Password Control

Users with Supervisor authority can add, edit or delete user information and change passwords. To exercise this feature, simply tap on the *Add*, *Edit* or *Delete* button.

8.4. Setup Parameters

These parameters can be changed by a user with a maintenance level access only.

8.4.1. Number S of sequentially rejected tablets that will trigger alarm. If set at 0, no rejected tablets are reported in the Audit Trail.

- 8.4.2. Number R of revolutions for auto startup rejection.
- 8.4.3. Number N of revolutions for average compression force calculation.
- 8.4.4. Number T of rejected tablets in N revolutions that will trigger alarm.
- 8.4.5. Number M of minutes of user inactivity to auto lock.
- 8.4.6. Number A of revolutions to switch to control mode.
- 8.4.7. Number M3 of stations that will pass under the compression rolls while the dosing adjustment signal is active (do not change this parameter without proper training).

8.5. Units of Measurement

Various units of measurement used in the software can be changed in the *Units of Measurement* dialog box on this screen. Transducer force units can be changed as well as tablet properties units.

8.6. Rejection Gate Delays

Rejection gate delays are viewable in the *Rejection Gate Delays* dialog box shown. The delays (in terms of the number of stations) include:

- 8.6.1. Between compression event and slow rejection gate.
- 8.6.2. To keep slow rejection gate open after a bad tablet was encountered.
- 8.6.3. Between compression event and fast rejection gate.

These parameters can be changed by a user with an MCC maintenance level access only.

9. Troubleshooting

In case there is some software file mix-up, the user can always restore the system to its original state (as of the latest update date) by copying the files from the second hard drive. This Restore procedure does not affect recipe and batch files created after the latest update date.

In case the primary hard disk has failed, the user can designate the backup disk as the primary one. This procedure requires an expert knowledge of the computer hardware and software and should not be attempted without proper support from MCC or user's internal computer support group.

In all other cases, call MCC for support. MCC can establish a modem connection and use remote software to virtually take over user's keyboard and screen. In this case, please:

- have modem line jack connected to a direct outgoing telephone line (non-digital)
- make sure MCC support personnel is available and ready to establish connection
- from the desktop, click on the MCC support icon

Alternatively, MCC can establish an Internet connection for your TPC computer support. Contact MCC for more information.

10. TPC Maintenance

10.1. Visual Inspection

Frequency: before each batch.

Check:

- The integrity of the cables connecting computer, printer, monitor, mouse, keyboard, instrument box, junction box, transducers, balance and hardness tester.
- The reliability of all the connections.
- Whether the compression transducer holder is properly installed and two 5 mm diameter holes of the compression pin are positioned on the vertical axis.
- Whether the locating screw and nut fasten the precompression transducer tightly.
- Whether the instrument box and TPC system enclosure are locked. If not, check if there is any damage or dust inside.

10.2. Other procedures

Cleaning: after each usage (to be performed by the users).

Lubrication: as per press manual.

Transducer recalibration: annually. In addition, perform the following checks on a weekly basis:

- The integrity of the transducers' protection coating.
- Visual inspection: see that there are no cracks or rust on the transducers' surfaces. Make sure transducers are not bent.
- See that there is no dust or powder inside the instrument box, junction box and System enclosure.
- See that there is no visible wiring damage of the connectors and other components inside the instrument box, junction box and System enclosure.

Dust filters replacement (computer cabinet enclosure): every 24 months under normal operating conditions.

Hardware maintenance is conducted in accordance with MCC SOP # 1015 *System Hardware Maintenance*.

10.3. Cleaning procedures

In addition to cleaning instructions contained in the manuals for the press, scale balance, hardness tester and original electrical equipment, cleaning of TPC should be done by the user after each usage as follows:

- Remove the dust and powder deposit from the electrical cabinet and the TPC enclosure using soft brushes and vacuum cleaner.
- Detach the ejection transducer and remove the material deposit from its lower surface and from the adjacent surface of the ejection plate base.
- Make sure there is no powder deposits inside the computer enclosure and junction box.

10.4. TPC Relocation Instructions

Preparation for transportation

- Disconnect the cables coming from the tablet press, balance and hardness tester.
- Secure the cables to prevent them from damage during transportation.
- Disconnect the computer, monitor, printer, keyboard, mouse, instrument box, and remove them from the mobile enclosure.
- Make sure that the covers and doors of the computer mobile enclosure and instrument box are tightly closed.
- Pack separately the computer, monitor, printer, keyboard, mouse, mobile enclosure, balance, hardness tester, instrument box, cables and press.
- All the components must be thoroughly secured.

Assembly after transportation

- Check the integrity of all the components.
- Assemble the system in accordance with appropriate project layout drawing.
- Be sure PC power is OFF prior to making cable connections and powering up system.

11. Glossary

ADC	Analog To Digital Converter. A computer board that converts incoming Analog electrical signals into Digital counts according Converter's bit resolution
Amplifier	Device essential for any instrumentation transducer. It is used to provide gain (increase the output voltage level) and excitation (the stable reference voltage) and also balance the bridge (so that the numerical value of a baseline will be reduced effectively to zero). Additional features of the amplifier may include filtering and shunt calibration.
Calibration	Comparison of transducer outputs at standard test loads. A line representing a best fit to data is called a calibration graph.
Calibration Factor	A load value in engineering units that a transducer will indicate for each volt of output, after amplifier gain and balance.
Channel	A path that interconnects the components of computer and sensing devices, across which data and signals can be sent.
Full Load	The greatest load a piece of equipment is designed to carry under specified conditions (rated load).
Full Scale (FS)	The total interval over which an instrument is intended to be operated. Also, the output from transducer when the maximum rated stimulus is applied to the input.
Hysteresis	The maximum difference between transducer output readings for the same applied load. One reading is obtained by increasing the load from zero and the other reading is obtained by decreasing the load from Full Scale (rated) load. Measurements should be taken as rapidly as possible to minimize creep.
Instrumentation	Strain gauge or piezoelectric transducers installed on a tablet press to convert force into voltage. Other types of instrumentation measure torque, temperature, pressure, level, speed, etc.
Modulation	Re: Amplitude Modulation: Modification of an amplitude of a waveform (carrier) so that it varies in step with the instantaneous value of another wave (signal).
Modulation Factor	In an amplitude -modulated wave, the ratio of half the difference between the maximum and minimum amplitudes to the average amplitude, in percent.
Non-Linearity	In Calibration: The maximum deviation of the calibration points from a regression line (best fit to the data), expressed as a percentage of the Full Scale (rated) output and measured on increasing load only.
Proximity Switch	A proximity switch transducer is a non-contact electromagnetic pickup device that senses the presence or absence of metal. It is installed on the press in order to mark the beginning of a turret revolution and thus enable station identification by system software.
Repeatability	The maximum difference between transducer output readings for repeated applied loads under identical loading and environmental conditions. The ability of an instrument to give identical results in

	successive instances.
Strain Gages	Foil, wire or semiconductor devices that convert pressure into electrical current. Foil gages, known for robust application range, different nominal resistance and transverse sensitivity control, are most commonly used for tablet press instrumentation.
TPC - Tablet Rejection Controller	A system that performs and monitor tablet rejection for tablet presses. TPC software is monitoring and control program that runs under the Microsoft Windows operating environment
Transducer	A device that converts energy from one form to another (e.g. force to voltage)
Wheatstone Bridge	A special arrangement of strain gages to ensure signal balancing and temperature sensitivity compensation

12. MCC Support

12.1. Contact MCC for support during normal working hours by any means available below.

12.2. For modem support, special remote control software was installed. Long distance troubleshooting, upgrades and training are just a click away. Contact MCC to start using the modem support.

Metropolitan Computing Corporation

Process Instrumentation, Monitoring and Control

6 Great Meadow Lane, East Hanover, New Jersey 07936, U.S.A.

e-mail: mail@mcc-online.com Web address: www.mcc-online.com

Phone (973) 887-7800

Fax (973) 887-8447